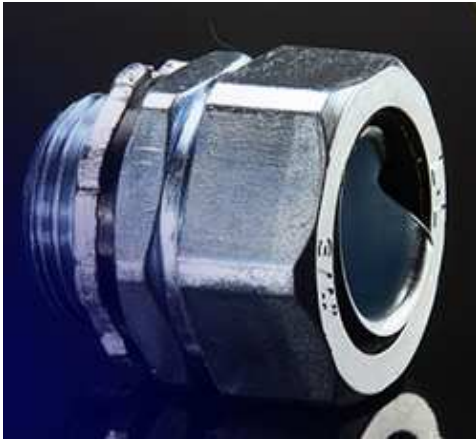
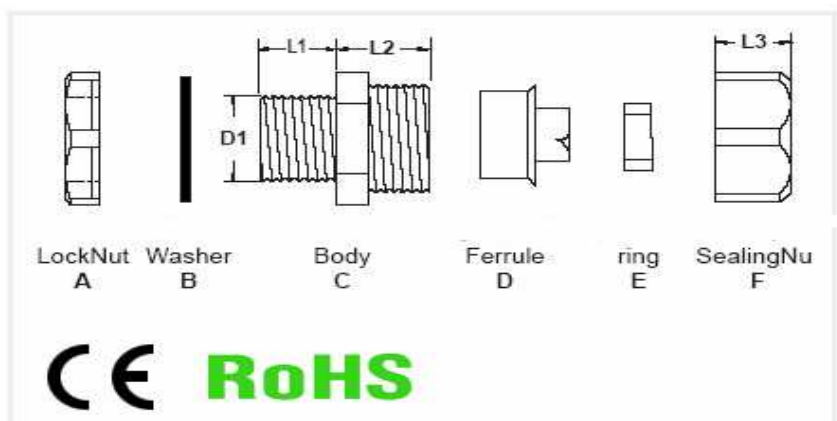




## Staright Fittings For PVC Covered , Liquid Tight Conduit



<b>Thread Specification:</b>	BS, Metric, PG
<b>Material:</b>	A, C and F part made of intensified zinc alloy, B and E part made of butyronitrile rubber, D is made of steel plate
<b>Working temperature:</b>	-40°C-- +100°C, 120°C in short time.
<b>Protection grade:</b>	IP65
<b>Characteristics</b>	<ol style="list-style-type: none"> <li>1. Intensified zinc alloy, beautiful appearance, compact structure, high intensity.</li> <li>2. Designed strictly accord to the conduit lock, equipped easily, powerful tensile resistance</li> <li>3. Waterproof, dustproof, acid-bases durable, alcohol, oil tallow and common solvent proof.</li> <li>4. Change the thread specification accord to your special need.</li> </ol>



P/N	flexible tubing to be equipped with		thread standard		OD of thread	thread length	Junction length	package	
	Metric	British system	Metric (M)	British system (G)	PG (PG)	D1	L1	L2+L3	
PFMM06/A	φ6	3/16"	M14 × 1.5	G1/4"	PG7	13.2	8	16	100
PFMM08/A	φ8	5/16"	M16 × 1.5	G3/8"	PG9	13.2	8	16	100
PFMM10/A	φ10	1/4"	M16 × 1.5	G3/8"	PG9	16.5	8	17	100
PFMM12/A	φ12 (13)	3/8"	M20 × 1.5	G3/8"	PG11/PG13.5	16.5	8	18	100
PFMM15/A	φ15 (16)	1/2"	M20 × 1.5 / M24 × 1.5	G1/2"	PG13.5/PG16	21.3	11	23	100
PFMM20/A	φ20 (19)	3/4"	M27 × 2.0 / M30 × 2.0	G3/4"	PG21	26.6	14	22	50
PFMM25/A	φ25	1"	M33 × 2.0 / M36 × 2.0	G1"	PG29	33.4	15	28	50
PFMM32/A	φ32	1-1/4"	M42 × 2.0 / M48 × 2.0	G1-1/4"	PG29	42.1	15	30	25